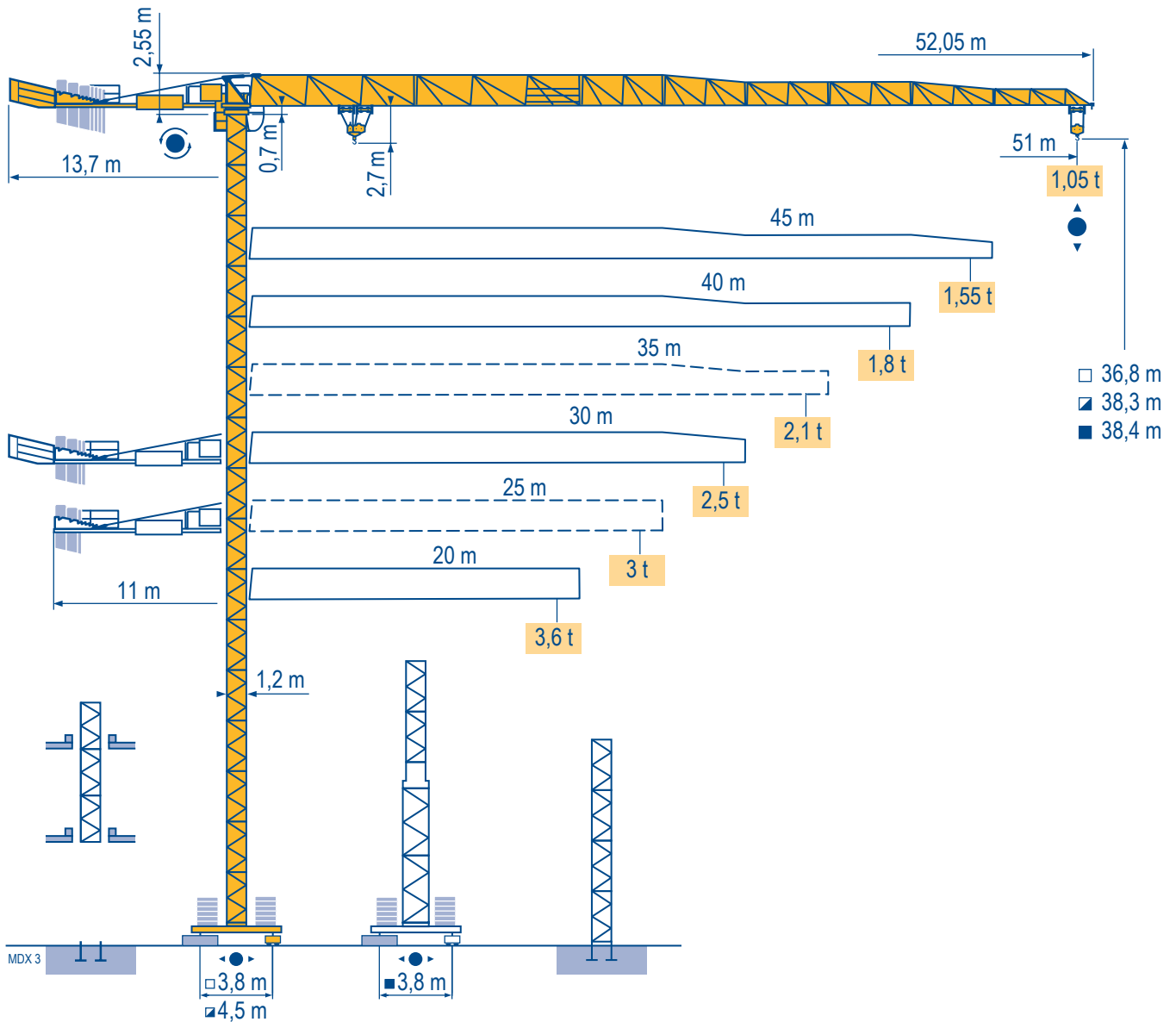


MCT 78



City Topless

Mat / Réactions \square 1,2 m

Maste /
Eckdrücke

20 m \Rightarrow 51 m

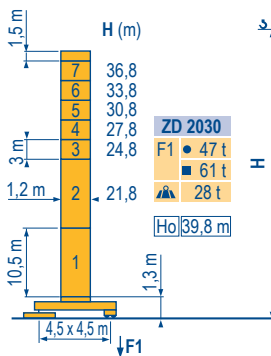
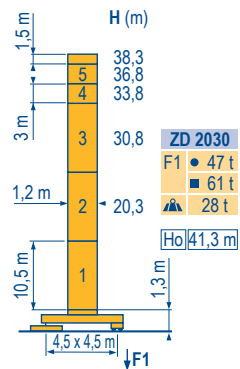
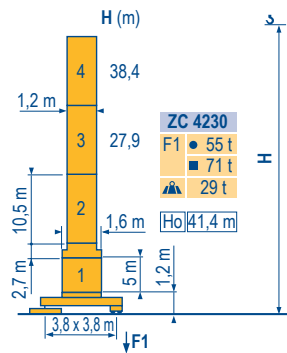
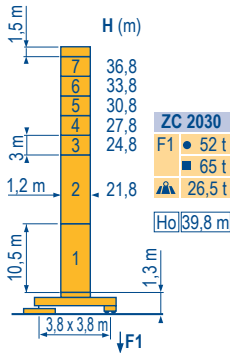
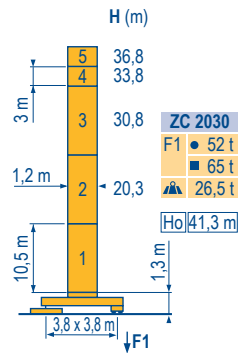
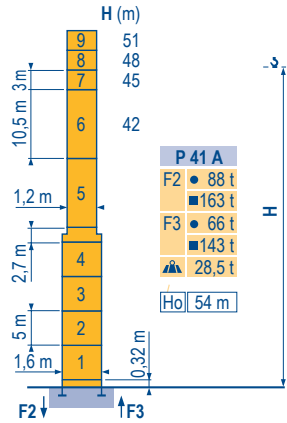
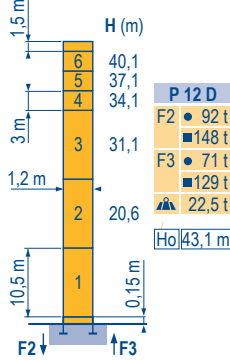
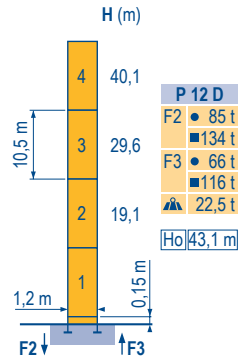
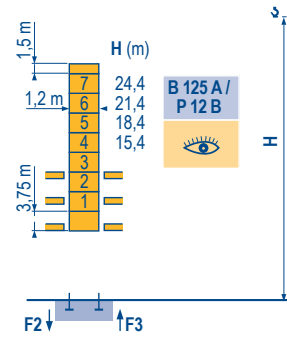
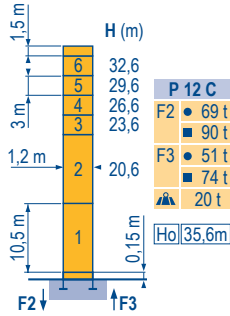
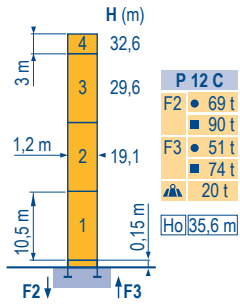
Masts /
Reactions

Mástil /
Reacciones

Torre / Reazioni

Tramo /
Reações

MDX 3



ZC 2030 - ZC 4230 - ZD 2030

2 F_1 $H_2 = H + 0,3 m$

3 F_1 $H_3 = H$

4 F_1 $H_4 = H + 0,2 m$

CityTopless
MCT 78



F

Réactions en service
Réactions hors service
A vide sans lest (ni train de transport) avec flèche et hauteur maximum.

Ho

H sans cabine

D

Reaktionskräfte in Betrieb
Reaktionskräfte außer Betrieb
Ohne Last, Ballast (und Transportachse), mit Maximalausleger und Maximalhöhe.

H Ohne Fahrerhaus

GB

Reactions in service
Reactions out of service
Without load, ballast (or transport axes), with maximum jib and maximum height.

H without cab

E

Reacciones en servicio
Reacciones fuera de servicio
Sin carga, sin lastre, (ni tren de transporte), flecha y altura máxima.

H sin cabina

I

Reazioni in servizio
Reazioni fuori servizio
A vuoto, senza zavorra (ne assali di trasporto) con braccio massimo e altezza massima.

H senza cabina

P

Reações em serviço
Reações fora de serviço
Sem carga (nem trem de transporte)- sem lastro com lança e altura máximas.

H sem cabine

Courbes de charges

Lastkurven

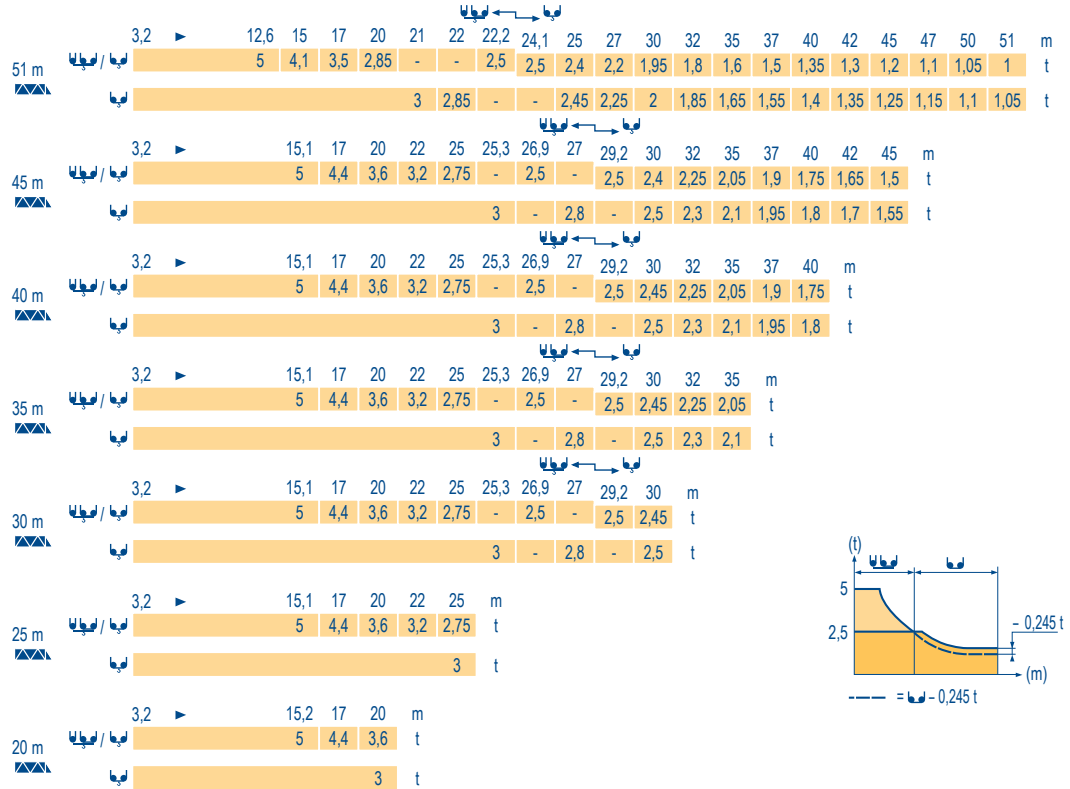
Load diagrams

Curvas de cargas

Curve di carico

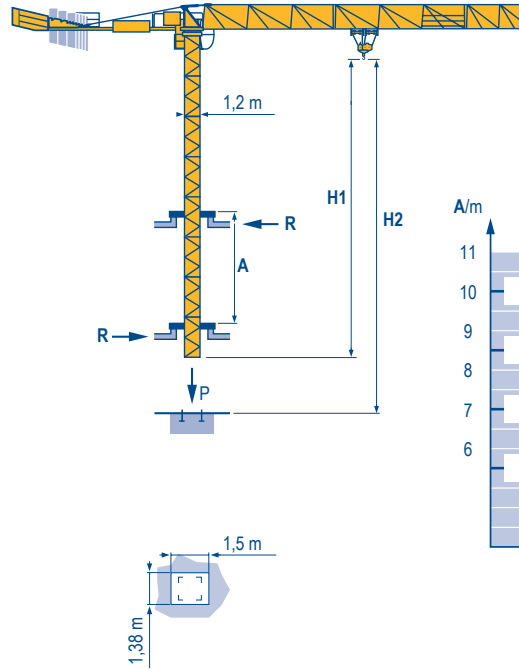
Curva de cargas

MDX 1

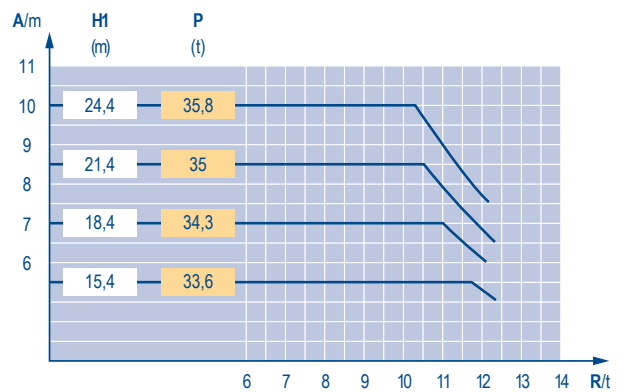


Télescopage sur dalles
Kletterkrane im Gebäude
Climbing crane
Telescopage gruas trepadoras
Gru in cavedio
Telescopagem sobre lages

MDX 2



B 125 A



City Topless
MCT 78

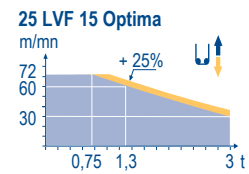
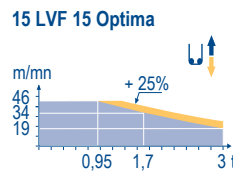
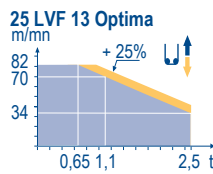
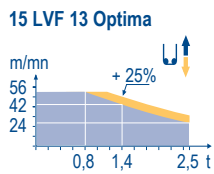


| | F | D | GB | E | I | P |
|-----------|------------------------------|-------------------------------|---------------------------|-------------------------------|------------------------------|------------------------------|
| A | Distance entre cadres | Abstand zwischen den Rahmen | Distance between collars | Distancia entra marcos | Distanza fra i telai | Distância entre quadros |
| H1 | Hauteur grue | Kranhöhe | Crane height | Altura grúa | Altezza gru | Altura da grua |
| P | Poids de la grue(en service) | Krangewicht (in Betrieb) | Crane weight (in service) | Peso de la grúa (en servicio) | Peso della gru (in servizio) | Peso da grua (em serviço) |
| R | Réaction horizontale | Horizontalkräfte | Horizontal reaction | Reaccion horizontal | Reazione orizzontale | Reacção horizontal |
| | Voir télescopage sur dalles | Siehe Kletterkrane im Gebäude | See climbing crane | Veja grua trepadora | Consultare gru in cavedio | Ver telescopagem sobre lages |

Mécanismes
Antriebe
Mechanisms
Meccanismi
Mecanismos

MDX3

| | | | | | | | | | | | | ch - PS hp | kW | | | | | |
|------------------------|--------------------|-----------------------|------------------------------------|-----------|--|--|--|--|---------------------------|--|--|---------------|----|----|-------|-------|---------|--|
| ▲ | 15 LVF 13 Optima | m/min | 2,8 → 7,6 → 24 → 42 → 56 | | | | | | 1,4 → 3,8 → 12 → 21 → 28 | | | | 15 | 11 | 200 m | | | |
| | | t | 2,5 2,5 2,5 1,4 0,8 | | | | | | 5 5 5 2,8 1,6 | | | | | | | | | |
| | 25 LVF 13 Optima | m/min | 4 → 11 → 34 → 56 → 70 → 82 | | | | | | 2 → 6 → 17 → 28 → 35 → 41 | | | | 25 | 18 | 329 m | | | |
| | | t | 2,5 2,5 2,5 1,45 1,1 0,65 | | | | | | 5 5 5 2,9 2,2 1,3 | | | | | | | | | |
| ● | 15 LVF 15 Optima | m/min | 2,3 → 6,1 → 19 → 34 → 46 | | | | | | | | | | 15 | 11 | 159 m | | | |
| | | t | 3 3 3 1,7 0,95 | | | | | | | | | | | | | | | |
| ● | 25 LVF 15 Optima | m/min | 3,6 → 9,6 → 30 → 48 → 60 → 72 | | | | | | | | | | 25 | 18 | 228 m | | | |
| | | t | 3 3 3 1,7 1,3 0,75 | | | | | | | | | | | | | | | |
| | RVF 61 Optima + | tr/min U/min - rpm | 0 → 0,8 | | | | | | | | | | | | 7,5 | 5,5 | | |
| | 4 DVF 3 | m/min | 0 → 63 | | | | | | | | | | | | 5 | 3,7 | | |
| | ZC 2030 ZD 2030 | RT 224 | m/min | 25 | | | | | | | | | | | | 2 x 4 | 2 x 2,9 | |
| | ZC 4230 | RT 324 | m/min | 12,5 - 25 | | | | | | | | | | | | 2 x 7 | 2 x 5,2 | |
| CEI 38 | | | IEC 38 | | | | | | | | | kVA | | | | | | |
| 400 V (+6% -10%) 50 Hz | | | 15 LVF : 25 kVA 25 LVF : 35 kVA | | | | | | | | | | | | | | | |



F
Levage
Distribution
Orientation
Translation

D
Heben
Katzfahren
Schwenken
Kranfahren

GB
Hoisting
Trolleying
Slewing
Travelling

E
Elevación
Distribución
Orientación
Traslación

I
Sollevamento
Distribuição
Rotazione
Traslazione

P
Elevação
Distribuição
Rotação
Translação



Document commercial non contractuel. Pour toute information technique se référer à la notice correspondante.

Unverbindliches Vertriebsdokument. Für technische Informationen, siehe die entsprechenden Anweisungen.

This commercial document is not legally binding. For any technical information, please refer to the corresponding instructions.

Documento comercial non contractuel. Para cualquier información técnica, ver la noticia correspondiente.

Documento commerciale non vincolante, per tutte le informazioni tecniche fare riferimento al catalogo istruzioni.

Documento comercial não contratual. Para qualquer informação técnica complementar consultar as respectivas instruções.



Americas

Tel : +1 888 479 7278
Tel : +1 717 593 2000

Europe - Middle East - Africa

Tel : +33 (0) 4 72 81 50 00
Tel : +44 (0) 191 522 2000

Asia - Pacific

Tel : +65 6264 1188
Fax : +65 6862 4040

www.manitowoccrane.com

18, rue de Charbonnières - B.R.173
69132 ECULLY Cedex - France

Tel : +33 (0) 4 72 18 20 20
Fax : +33 (0) 4 72 18 20 00
www.manitowoccrane.com

City Topless MCT 78

Code P-89985-56_Ref. 2006 40 MDX 4

Copyright.Reproduction interdite © POTAIN 2006